

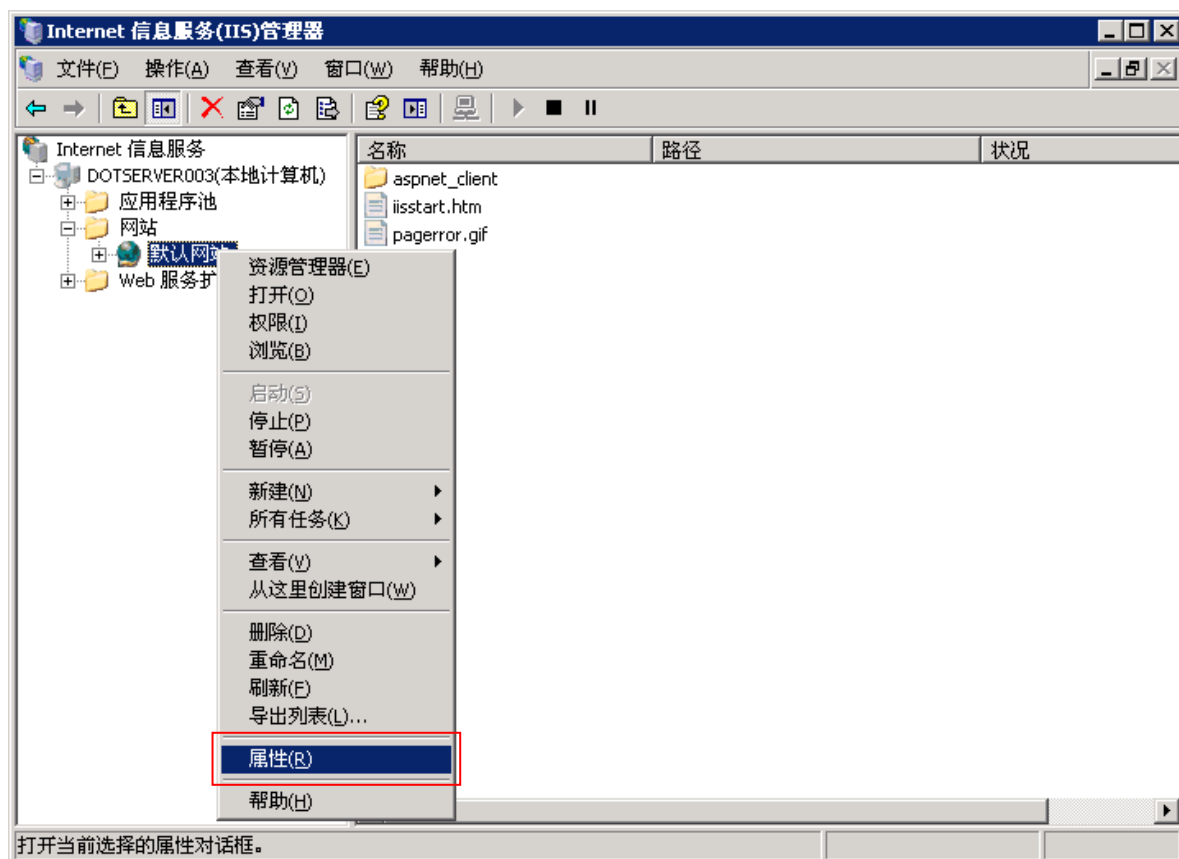
服务器 SSL 证书安装配置指南

IIS 6.0

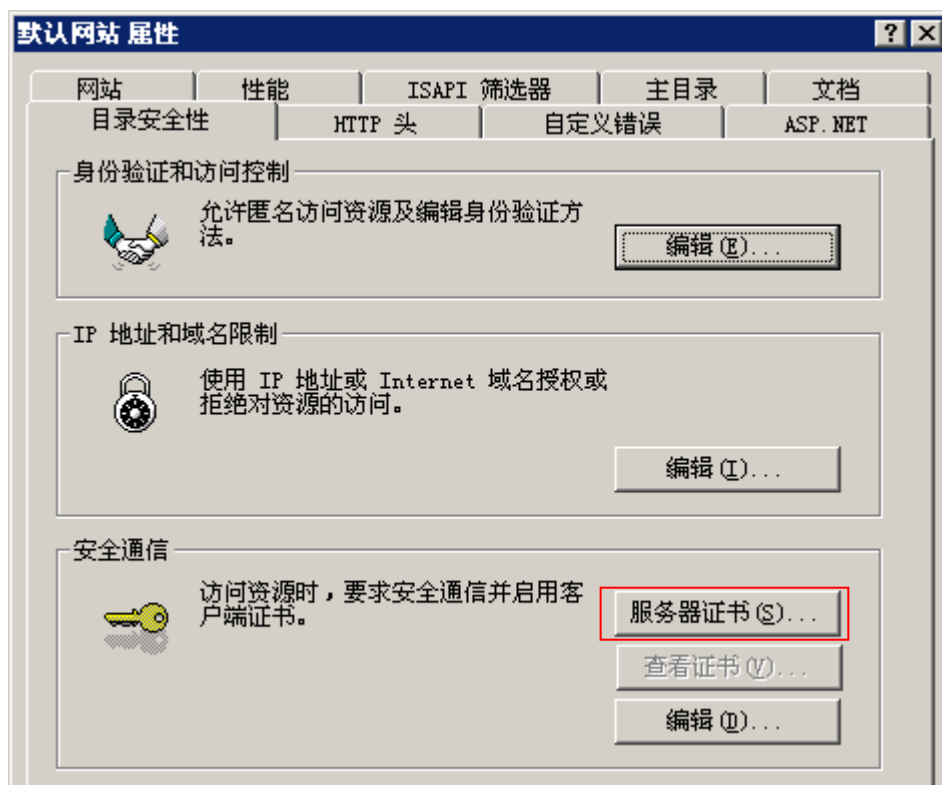
更新日期：2017-3-3

GlobalSign China Co., Ltd.

打开 IIS 服务管理器，打开 Web 站点的属性



选择目录安全性属性，点击服务器证书



选择从.pfx 文件导入证书，点击下一步



选择已有的 PFX 文件，点击下一步



输入该 PFX 文件密码，点击下一步



The screenshot shows the 'IIS 证书向导' (IIS Certificate Wizard) window at the '导入证书密码' (Import Certificate Password) step. The title bar reads 'IIS 证书向导'. The main text says '导入证书密码' and '必须提供密码才能导入证书。' (Must provide a password to import the certificate). Below this, it prompts '输入要导入的证书的密码。' (Enter the password for the certificate to be imported). A label '密码 (P):' (Password (P):) is followed by a text input field containing '*****'. At the bottom, there are three buttons: '< 上一步 (B)' (Previous Step (B)), '下一步 (N) >' (Next Step (N)), and '取消' (Cancel).

输入 SSL 端口号（443），点击下一步



The screenshot shows the 'IIS 证书向导' (IIS Certificate Wizard) window at the 'SSL 端口' (SSL Port) step. The title bar reads 'IIS 证书向导'. The main text says 'SSL 端口' and '为此网站指定 SSL 端口。' (Specify the SSL port for this website). Below this, it prompts '此网站应该使用的 SSL 端口 (P):' (SSL port (P) for this website:). A text input field contains the number '443'. At the bottom, there are three buttons: '< 上一步 (B)' (Previous Step (B)), '下一步 (N) >' (Next Step (N)), and '取消' (Cancel).

证书安装完成，点击**完成**



按照以上的步骤配置完成后就可以使用 <https://www.domain.com> 来访问了。
如有任何问题或疑问请直接与我们联系，谢谢！